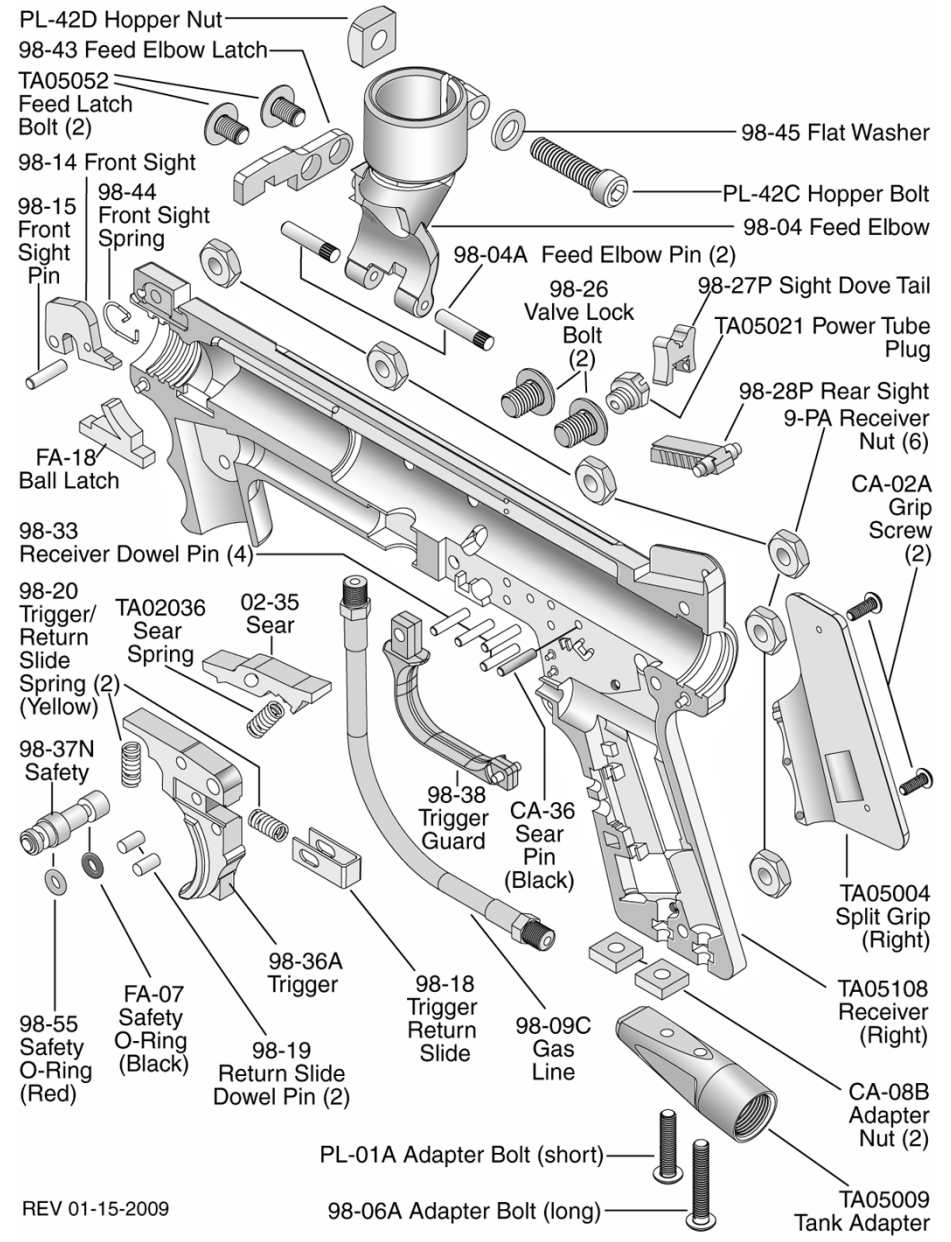


TRIGGER ASSEMBLY

- 1) Place 4 dowel pins and 1 black sear pin into locations as shown.
- 2) Then place the trigger and sear onto pins as shown.
- 3) Insert sear spring as shown.
- 4) Insert trigger spring (yellow) as shown.

98-20 Trigger Spring (Yellow)
98-33 Pins (4)
CA-36 Sear Pin (Black)
TA02036 Sear Spring
02-35 Sear
98-18 Slider (yellow spring not visible)
98-36A Trigger
98-38 Trigger Guard

WARNING
DO NOT DISASSEMBLE THIS MARKER WHILE IT IS PRESSURIZED WITH AIR. DO NOT PRESSURIZE A PARTIALLY ASSEMBLED MARKER.



REV 01-15-2009